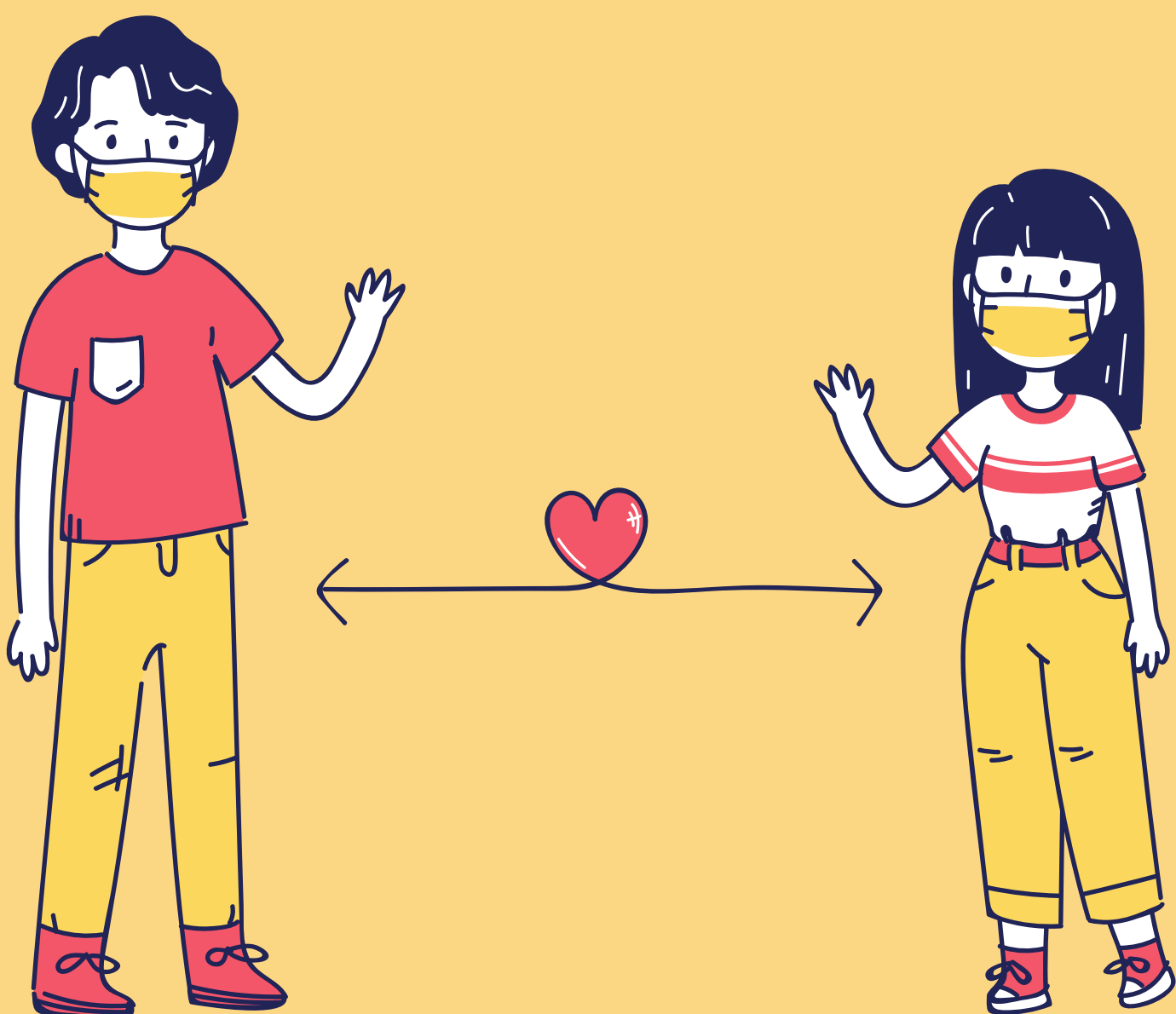


CASUAL VS CLOSE CONTACT

Casual Contact

Defined as being in the same indoor environment (e.g., classroom, office, gathering) with a symptomatic confirmed COVID-19 case.



Close Contact

Individuals who were within 6 feet of a confirmed COVID-19 case for a prolonged period of time (approximately 10 minutes or more) or had direct contact with the infectious secretions of a COVID-19 case (e.g., were coughed on).

